

CIVIL ENGINEERING



FEASIBILITY / PLANNING
DEVELOPMENT / GRADING
INFRASTRUCTURE DESIGN
CONDITION ASSESSMENTS
3D MODELING / VISUALIZATION
CONSTRUCTION MANAGEMENT

MISSION STATEMENT

Our mission is to provide Operations Research, and Civil and Environmental Engineering services with an emphasis on quality, functionality, and sustainability, through a focused approach on the client's needs, resulting in projects on-time and on-budget.

CIVIL ENGINEERING

Markets:

- Federal (DOD, DOI, VA experience)
- Public Works (Real Property, Water, Waste Water, Storm Water)
- Private, Commercial, & Residential Developments
- Contractors on Design-Build and Construction Support
- Architects for Civil Engineering & BIM support

Engineering:

- Phase I, II, or III horizontal civil engineering
- Expertise in Development; Water; and Wastewater Engineering

Modeling:

- Civil 3D for Civil Design,
- Storm & Sewer for Stormwater and Sewer Hydraulic Analysis
- Multiple programs for water hydraulic analysis

Stakeholder Outreach:

- 3ds Max or Infrastructure Modeler for 3D design visualization.

Building Information Modeling:

- Navisworks to integrate site design with other disciplines.

Construction Management:

- Navisworks for 3D Visualization and Schedule coordination.
- Adobe Acrobat for Field 3D Modeling and BIM Utilization
- Value Engineering/Shop Drawings/Field Engineering/As-Built

Communication:

- Dedicated PM; use 3D models during design for feedback

Quality Control:

- ISO 9000 compliant QA/QC program.

Locations:

- Business License & Licensed Engineers in CA, AZ, NV



**S&B CHRIST
CONSULTING, LLC.**

CORE VALUES:

- INTEGRITY
- QUALITY
- EFFICIENCY

CONTACT INFORMATION:

8485 West Sunset Road Suite 105
Las Vegas, NV 89113
Office: 702-202-6004

www.sbchristconsulting.com

DUNS: 830737263

CAGE: 5H9C0

STATUS:

- SBA 8(a)
- WOMAN OWNED
- DISADVANTAGED
- VETERAN OWNED
- SERVICE-DISABLED VETERAN OWNED
- SMALL BUSINESS



NAICS CODES:

- 541330—Engineering Services
- 541340—Drafting Services
- 541618—Other Management Consulting Services
- 541620—Environmental Consulting Services
- 541690—Other Scientific and Technical Consulting

EXAMPLE PROJECTS



Searchlight Water Resource Center:

Modified existing wastewater treatment ponds on 22-acre site; Average Day of 50k gpd.
 Client: Clark County Water Reclamation District; Subconsultant to Black & Veatch
 Scope: All Civil Engineering
 Contract: Design-Bid-Build
 Fee: \$271,000; Benefits: Saved approximately \$200,000 through lower design fees



Central Plant Influent Lift Station:

Feasibility study to correct surcharged 69-inch sanitary sewer with new alignment or LS.
 Client: Clark County Water Reclamation District
 Scope: Feasibility study included hydraulic analysis and lift station design for 115 MGD
 Contract: Feasibility Study
 Fee: \$104,108; Benefits: Expertise in hydraulic analysis and sanitary sewer engineering



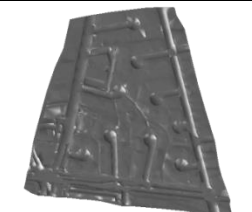
Kodachrome Road Repairs and Restoration:

Modified existing 8-mile BLM roadway through a sensitive environment.
 Client: BLM (Managed by USACE-Phoenix); Subconsultant to Barajas & Associates
 Scope: Prepared the Work Plan including 32 civil design sheets
 Contract: POCA
 Fee: \$19,125; Benefits: Saved approximately \$60,000 through innovative 3D design



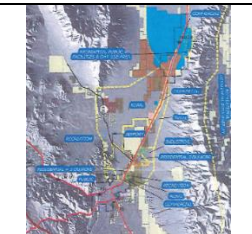
Cedar Pass Water System:

Permitted an existing AF non-transient non-community water system.
 Client: US Air Force; Subconsultant to URS
 Scope: Prepared the Application, Hydraulic Analysis, O&M Manual, Sampling Plan, Backflow Plan, Completed an Engineering Assessment and Coordinated with State
 Contract: Engineering Services
 Fee: \$32,800; Benefits: Completed contract approximately \$1,500 under budget



Landsman Gardens Facility Modernization:

Provided Civil engineering & ADA compliance for 12.5 acre site with 102 structures
 Client: Southern Nevada Regional Housing Authority; Subconsultant to RAFI Architecture
 Scope: Redevelop site for 7 ADA units, Street ADA compliance, and site drainage
 Contract: Design-Bid-Build
 Fee: \$97,158; Benefits: Knowledge of Local Permitting Processes



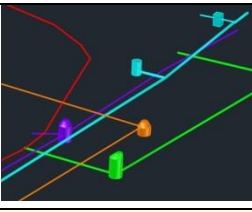
Workforce Housing Value Needs Assessment:

Identified current housing availability, projected needs, and development considerations.
 Client: White Pine County
 Scope: Researched information, evaluated utilities, and prepared a final report
 Contract: Engineering Services
 Fee: \$20,000; Benefit: Broad range of capabilities including engineering, planning, financial analysis, and condition assessment.



Coatesville, VA Water Line Drawings Update:

Locate, model, assess condition and health risk of the medical center water system.
 Client: Department of Veteran Affairs
 Scope: Sub-surface utility engineer, hydraulic analysis, 2D and 3D modeling and design.
 Contract: Engineering Services
 Fee: \$293,651; Benefits: Expertise in 3D modeling and subsurface utility investigation



Coatesville, VA Sanitary Sewer Replacements:

Completed a condition assessment and rehabilitation design of gravity sewer piping.
 Client: Department of Veteran Affairs
 Scope: Prepared design drawings and specifications for over 2,000 feet of sewer piping.
 Contract: Design-Bid-Build
 Fee: \$98,233; Benefits: Expertise in sewer condition assessment and cured-in-place-

sbchristconsulting.com
phone: 702-202-6004

8485 West Sunset Road Suite 105
Las Vegas, NV 89113